



Futures Referees Orientation

Saturday, September 20, 2025

2:30 pm to 4:30 pm

Boca Raton Community Center

Meeting Agenda

- Welcome
- Logistics
- Duties of an Assistant Referee
- Characteristics of a Good Referee
- Success

Support Staff

- Bruce Spidell/SABR Director of Referees
 - 561-350-4148
 - referees@sabrsoccer.net
- Brian Behrmann/SABR Recreational Game Assignor
 - 561-504-5862
 - briansabr@aol.com
- Mentors

Why Did SABR Introduce the Futures Referees Program?

- Provides opportunities for 11- to 13-year-olds to gain experience and confidence and get paid to work as a referee
- Assigns mentors to oversee the Futures Referees in a low pressure (U9/U10) environment
- Creates a pipeline of referees who can work for SABR as certified referees after they turn 14

How Will the Program Work?

- FRs will work Saturday U9/U10 games under the supervision of a mentor and with an experienced referee in the middle
- FRs will tell us each week if/when they are available
 - FRs will let us know of any U9/U10 siblings so we do not assign you to those games

How Do I Sign up For Games?

- SABR has a referee game scheduling system that allows referees to input their availability each week
- Brian Behrmann will assign games
- Referee receives an email notification
- ***Referee must confirm that they will indeed referee the games assigned***
- System is at <https://sabr.soccerref.net>

System Demonstration

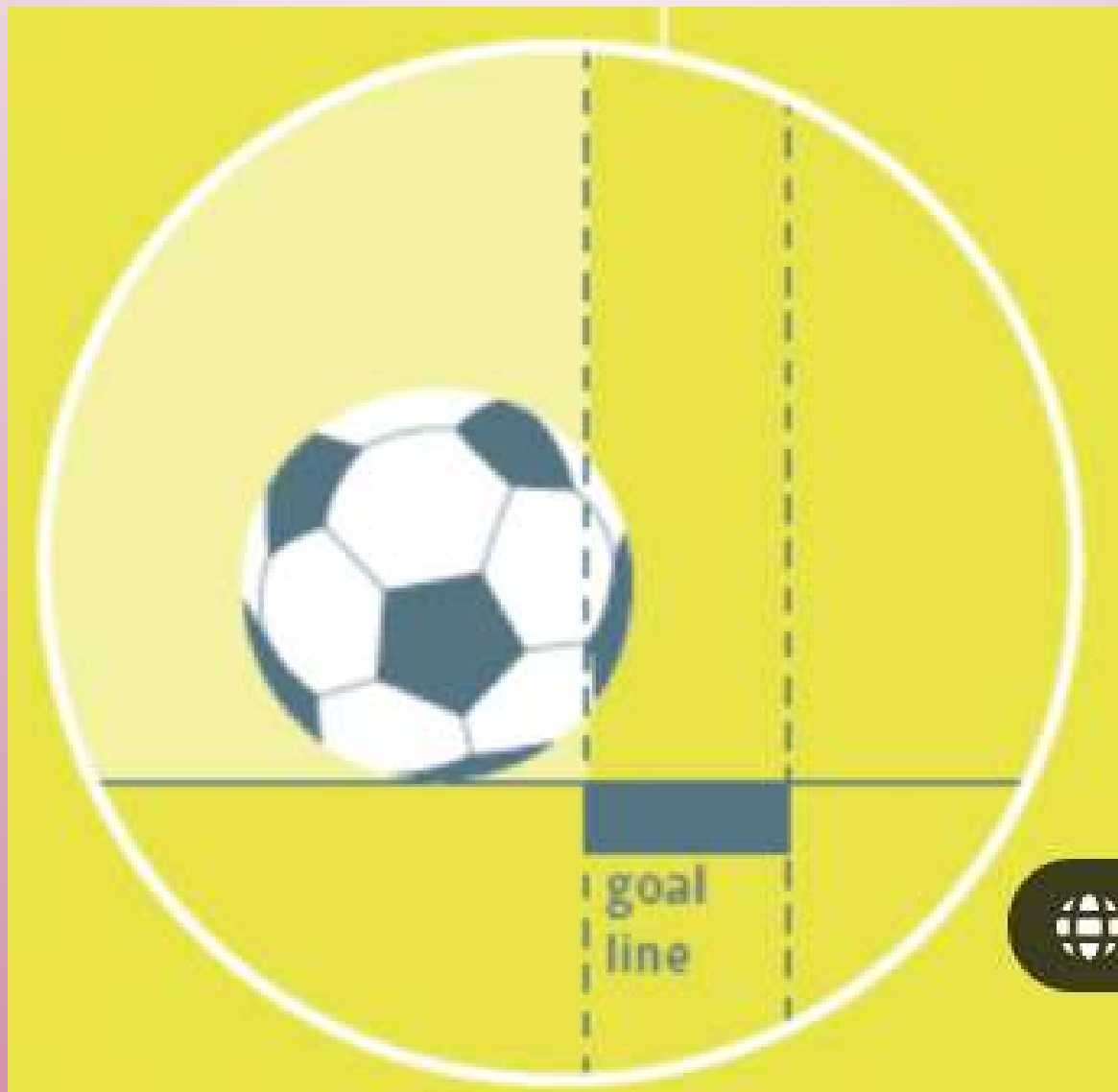
Referee Payment Process

- You must fill out the IRS W-9 form and return it to:
Mr. Robert Rollins,
The Beacon Group, Inc.,
6001 Broken Sound Parkway, NW, Suite 500
Boca Raton, FL 33487
- You will get a direct deposit via Melio approximately every two weeks
 - Let us know if the payment will be made to the referee's or their parent's bank account
- You will not receive an IRS Form 1099 form for 2025 or 2026 since you will earn less than \$600

Duties of an Assistant Referee

- Signal if the ball crosses a touchline or goal line
- Signal offside
- Alert the Referee if the AR see or hears something that the Referee did not
- Timekeeping backup for Referee
- Debrief with Mentor, Referee and other AR after the game

What is your call???



Direction of play
←

What is your call???



**The ball goes across the touch
line—what is your signal?**

The ball goes across the touch line—what is your signal?



When the ball completely crosses the touch line for a throw in, signal by raising your flag at a 45° angle in the direction in which the team entitled to the throw-in is attacking.

<https://www.wikihow.com/Signal-and-Position-Yourself-As-an-Assistant-Referee-in-Soccer>

**The ball goes across the goal line off an offensive player and is not a goal—
what is your signal?**

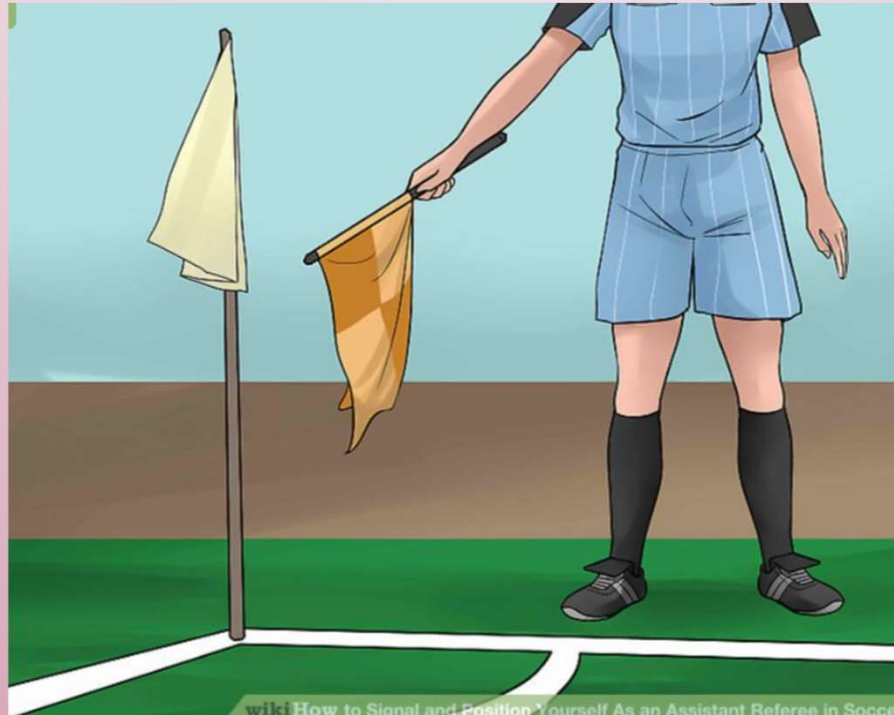
The ball goes across the goal line off an offensive player and is not a goal— what is your signal?



When the ball completely crosses the goal line for a goal kick, signal by pointing your flag straight across the field toward the goal area. Use your right hand to avoid impeding your view of the players and the referee.

**The ball goes across the goal line off a defensive player and is not a goal—
what is your signal?**

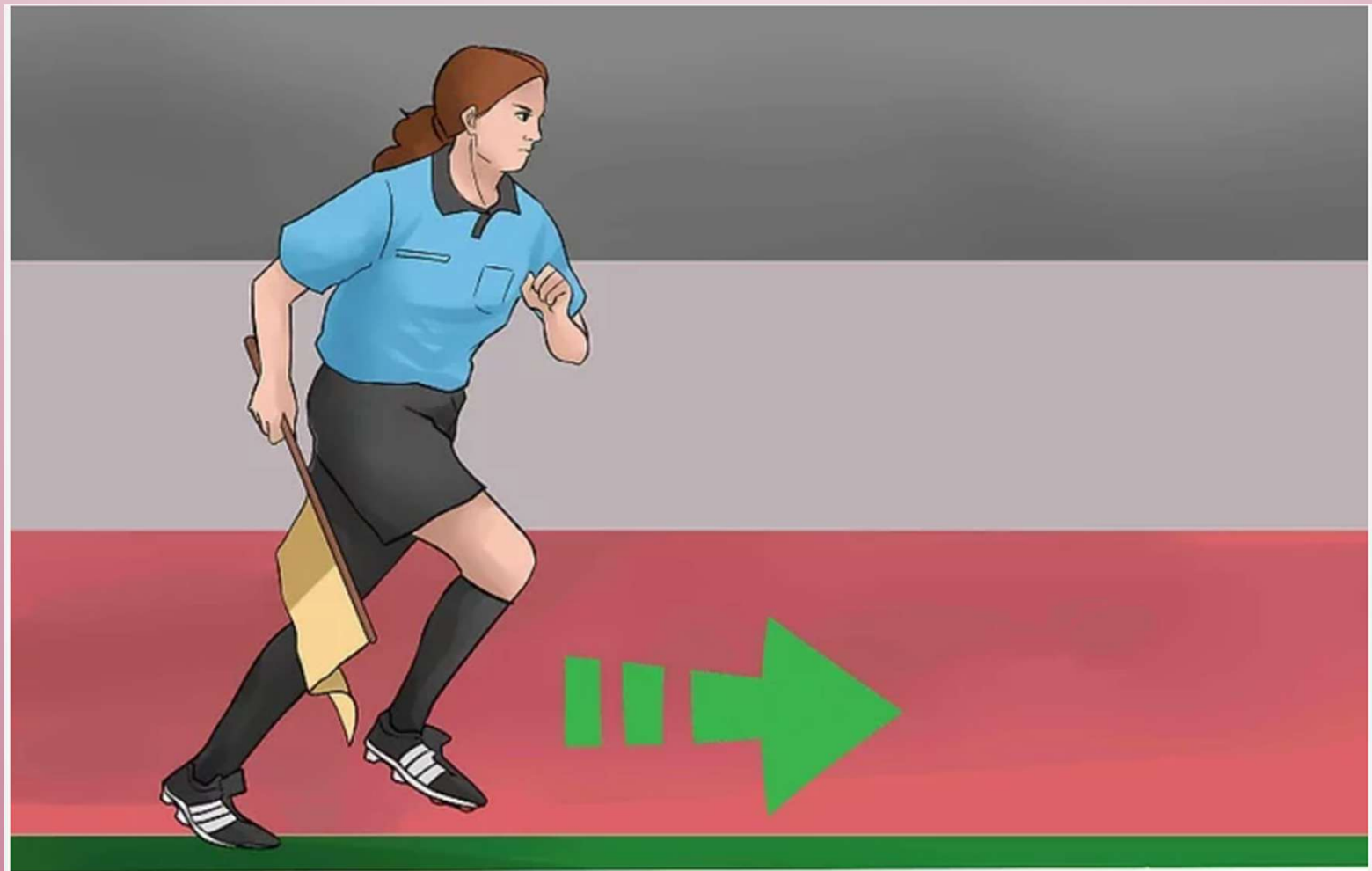
The ball goes across the goal line off a defensive player and is not a goal— what is your signal?



When the ball completely crosses the goal line for a corner kick, signal by pointing the flag at a 45° angle downwards toward the corner flag on your side of the field—even if the corner will be taken across the field.

**The ball goes across the goal
line for an apparent goal—
what is your signal?**

**The ball goes across the goal line for an apparent goal—
what is your signal?**



The ball goes across the goal line for an apparent goal— what is your signal?

When the ball crosses the goal line between the goal posts, you will do one of three things:

- If there is no occurrence that would bring the validity of the goal into question, make eye contact with the referee and sprint a short distance up the touchline towards the center line. Then record the goal.
- If there was an offside violation by the team that scored the goal, signal the offside violation.
- If there was a foul by the team that scored the goal that you believe the referee did not see or any other problem that might invalidate the goal, stand at attention and do not move until the referee consults you about the situation.

**You see a player committing a foul
out of the sight of the Referee—
what is your signal?**

You see a player committing a foul out of the sight of the Referee— what is your signal?



If you detect a foul and are certain that the referee did not see it and would not have applied advantage had he or she seen it, raise your flag straight up in the air. Make eye contact with the referee, and give the flag a slight wave. If the referee stops play, signal with the flag 45° upwards in the direction in which the free kick should be awarded.

You see a defensive player committing a foul out of the sight of the Referee inside the Penalty Area—what is your signal?

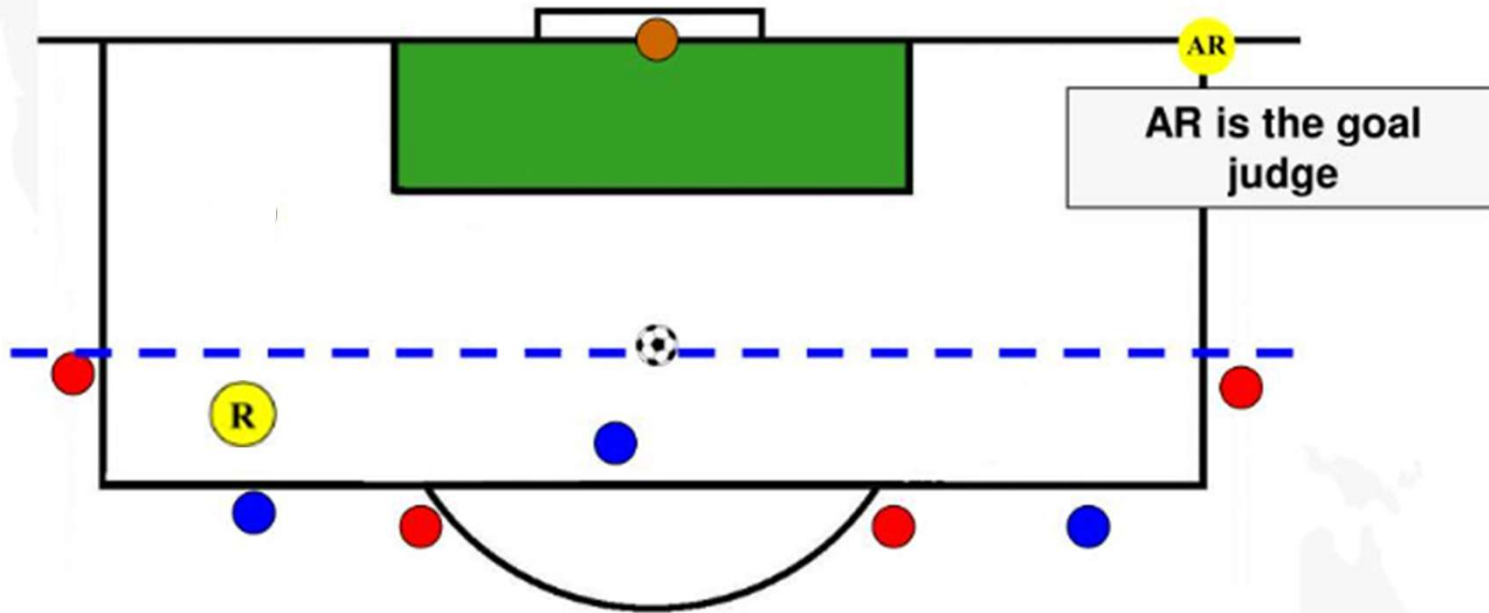
You see a defensive player committing a foul out of the sight of the Referee inside the Penalty Area—what is your signal?



In the event that the foul you detect in the above scenario is committed by a player in his or her own penalty area, raise your flag and give it a slight wave, but instead of signaling a direction, hold your flag horizontally across your waist to indicate that the offense warrants a penalty kick. If the referee awards the PK, move to penalty kick positioning.

Penalty Kick Positioning

POSITIONING DIAGRAM for The PENALTY KICK



Note the positions of the Referee and Assistant Referee

**You are the AR on the coach side and they want to make a substitution—
what is your signal?**

You are the AR on the coach side and they want to make a substitution— what is your signal?



If, during a valid substitution opportunity, one of the teams wishes to make a substitution *and* the substitute(s) is/are ready and standing at the center line, raise your flag horizontally over your head (your hands should resemble the American football "touchdown" signal with the flag held between them). Then conduct the substitution as directed by the rules of competition. **(If you are the other AR, mimic the signal of your partner.)**

**You detect an offside violation—
what is your signal?**

You detect an offside violation— what is your signal?



When you detect an offside violation by the attacking team, raise your flag straight in the air. If the referee acknowledges the signal by stopping play, drop the flag to a position indicating where the offense occurred: 45° upward for an offense occurring on the far side of the field, straight across the field for an offense in the middle of the field, and 45° downward for an offense on the near side of the field.

SABR Non-FIFA Rules--Length of Games, Size of Ball, Offside, and Free Kicks

Description	U9 & U10	U11 & U12	U15	U19
Ball Size	4	4	5	5
Max No. Players	7	9	11	11
Min. No. Players	5	6	7	7
Length of Halves	25 Minutes	30 Minutes	35 Minutes	40 Minutes
Free Kicks	Indirect & Direct	Indirect & Direct	Indirect & Direct	Indirect & Direct
Opponents Distance on Free Kicks	6 Yards	10 Yards	10 Yards	10 Yards
Penalty Kicks	Yes	Yes	Yes	Yes
Referee Explains Foul to Player	Yes	No	No	No
Retake Throw Ins (1)	Only U9's	No	No	No
Offside →	Yes (BOL)	Yes	Yes	Yes
Heading the ball	No	No (Yes BU12)	Yes	Yes
Build-Out Line	Yes	No	No	No

Build out line (U9/U10)

- The build out line (BOL) is a special rule developed by US Soccer and adopted by SABR for U9 & U10 and serves 2 main purposes.
 - It promotes playing the ball out of the back in a less pressured setting by requiring the attacking team to stay behind the line while the GK first handles the ball.
 - It denotes where offside offenses may be called; previously, there was not offside for U9 & U10 but now it can be called, but not between the halfway line and BOL.



Build out line, Continued

- Build out lines should be equidistant between the penalty area line and halfway line.
- When GK has the ball in his/her hand during play from the opponent, the opposing team must move behind the build out line until the ball is put into play. Then GK can pass, throw or roll the ball into play (Punts and drop kicks are not allowed).
- After the ball is put into play by GK, the opposing team can cross the build out line and play resumes as normal.
- The opposing team must also be behind the build out line during a goal kick until the ball is put into play.

Build out line, Continued

- The AR only needs to run between the goal line and the BOL, not the goal line and the halfway line.
 - ***This is the most important special rule for U9/U10 that the AR must remember!***
- The AR should help the Referee ensure that the opposing team does not encroach the BOL before the GK releases the ball.

Other Duties of an Assistant Referee

- Alert the Referee if the AR see or hears something that the Referee did not
 - Foul
 - Foul language
 - Too many players on the field
 - Player wearing jewelry
- Timekeeping backup for Referee
 - Assume that the Referee's watch will malfunction!
- Debrief with Mentor, Referee and other AR after the game
 - Do not leave the field until you have had this important meeting!

Characteristics of a Good Referee

- Attendance
 - Allow time to arrive 15-30 minutes before the game
 - Be reliable—if you accept an assignment, you are expected not to cancel except for sickness or family emergency
- Appearance
 - Look sharp with proper uniform, with shirt tucked in
 - Bring flag, watch, pen, paper
- Be decisive with your signals
 - Even if you are not 100% sure about which team gets a throw-in, or if offside occurred, make your best call with confidence
 - This gains respect from the coaches and players

We want you to succeed!

- Bruce, Brian, and the Mentors are available for questions
- Feedback is to help you improve, not to criticize you
- Report any coach, player, or fan abuse to the Mentor or head Referee
- ***Attend the Referee Orientation meeting on October 25***
- ***Attend the Jamboree on November 1***